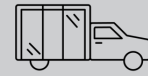
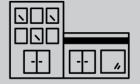




We Show Up



We Bring It



We Do It Right

## Brin provides a perfect-fit solution for a residential bathroom remodel

Heartland Glass, a division of Brin, worked with homeowner Jan Knutson to provide a shower door that would properly fit the opening in her newly tiled bathroom.

### THE CHALLENGE

After new tile was installed in this homeowner's bathroom, there was one (not-so-small) problem. The new shower opening was two inches wider than the old opening—which caused the shower door swing to hit the toilet.

### OUR SOLUTION

Instead of a heavy glass shower door, Heartland Glass designed a new door layout using a semi-frameless door and extended jamb. The door was now able to swing through and avoid the toilet completely.

Shortages and errors on the vendor side caused unexpected challenges in this project. When the vendor didn't deliver the parts as expected, which would have normally caused installation delays, Heartland Glass sprang into action. They contacted the vendor, explained what parts were missing, and then sent an employee to pick up the parts—located an hour's drive from the job site. Even though it wasn't their error, the Heartland Glass team went the extra mile to make sure the door could be installed on schedule.

### RESULTS ACCOMPLISHED

Not only was the homeowner pleased with the new look of the door, but she was thrilled that Heartland Glass was able to get it installed within her timeframe. It relieved some pressure as she was preparing the house for sale—since the shower door was the last item on her remodel checklist.

### Why was Brin Glass best suited for the work?

Knowledge and experience! Heartland Glass demonstrated the dedication and commitment needed to get the job done right and on-time.

## Residential Project

### Contact

Jan, Homeowner

**Project Start** May 2021

**Project End** June 2021

**Executed By** Heartland Glass



Above: Brin comes through for the homeowner with quick problem-solving on a shower door for this bathroom remodel.