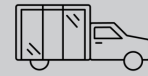
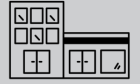




We Show Up



We Bring It



We Do It Right

## Brin helps a multi-phase hospital expansion project shine

Heartland Glass, a division of Brin, worked with Kraus Anderson Construction on a major expansion at Welia Health (formerly FirstLight), a 25-bed hospital in Mora, Minnesota. This multi-phase project included additions to the Emergency Department, Clinic and Physical Therapy Departments, plus renovations of existing space.

### THE CHALLENGE

One significant challenge was timing. The glass needed to be installed in staggered phases over different seasons, which would require multiple glaziers on the job site. This could potentially create a disjointed process and compromise quality or efficiency. Another issue was a design obstacle in the hospital rooms—the lift tracks intersected the barn door tracks for the bathroom sliding doors that Heartland Glass was supplying and installing.

### OUR SOLUTION

First, to streamline the process for Kraus Anderson while also building trust and consistency throughout the project, Heartland Glass made it a priority to keep the same faces onsite during each phase. Second, Heartland Glass’s skilled crew figured out an efficient cadence for installing the sliders and, thanks to help from KA’s supportive job supervisors, kept up the momentum to finish on schedule.

### RESULTS ACCOMPLISHED

Since the successful completion of this project, Heartland Glass has continued building a trusted relationship with both Kraus Anderson and Welia. Additional projects have included COVID-19 panels, an entrance door and miscellaneous glazing work.

### Why was Brin Glass best suited for the work?

Thanks to a Heartland Glass sales manager’s close proximity and connection to the hospital, Heartland Glass was able to get onsite quickly as needed. Whether meeting with KA supervisors and project managers, or assisting with questions from the glass crew, their commitment and collaboration helped this project shine.

## Welia Health

### Contact

Jessica Masterson, Project Manager  
Kraus Anderson Construction

**Project Start** July 2017

**Project End** November 2019

### Executed By Heartland Glass



Above: Brin provided glass for the interior and exterior of the hospital.

Right: Heartland Glass devised a solution in the field to combat a hospital room design obstacle (lift tracks intersected the barn door tracks for the bathroom).

