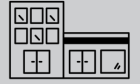




We Show Up



We Bring It



We Do It Right

Emergency service repair

Workspace Property Trust called on Brin for emergency service after one of its commercial properties was damaged in a storm.

THE CHALLENGE

A large tree was blown over during a Saturday morning storm, damaging a large glass curtain wall at a Commercial Office Building In Eden Prairie, MN that needed attention ASAP. The damage posed a hazard to tenants, made the building less secure, and exposed the interior to further environmental damage.

OUR SOLUTION

A senior property manager reached out to Brin for emergency service to clean up and secure the windows. After she shared photos, a Brin representative met her on-site to assess the damage and coordinate the various service providers needed that day.

RESULTS ACCOMPLISHED

This well-coordinated effort helped all parties get the work done most efficiently to minimize the time/cost of having multiple crews on-site. After the tree was removed that morning, Brin removed the broken windows and put boards up so the interior could be accessed safely.

Why was Brin Glass best suited for the work?

As a result of our expertise with installing and repairing curtain wall window systems, Brin was able to assemble 3 glaziers and the proper access equipment to secure the building that same day. In addition, Brin had installed the existing windows at this property in the 1990s and had access to the original blueprints, so Brin could quickly provide a realistic estimate and make final repairs. Knowing the expectations of the building's management team enabled Brin to provide great communication and facilitate a successful completion of the project.

“Brin Glass has become our trusted vendor over the years. We can count on their team to support our efforts in multiple arenas for window and door maintenance. Additionally, Brin has stepped up in a number of emergency situations, provided timely response and ensured our assets were secure. We know when we call Brin, the job will be done right.” – Elizabeth, Senior Property Manager

Workspace Property Trust

Contact

Elizabeth, Senior Property Manager
Workspace Property Trust

Project Start July 18, 2020
Project End October 2, 2020

Executed By Brin Glass Service



Brin provided same-day emergency glass repair service after this commercial office building was damaged by a falling tree during a storm.